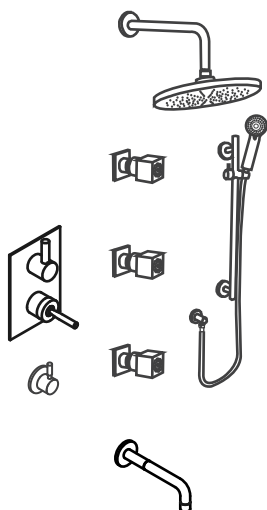


120.2105SPA | Joystick 4 - Way Spa System with Multi-Directional Water Flow



SPECIFICATIONS:

- Solid Brass construction
- 4 Hole Installation
- 19 LPM Flow Rate at 3 BAR
- Ceramic disc cartridge allows both volume and temperature control

FINISHES :

- Chrome - 120.2105SPA

STANDARDS:

- ASME A112.18.1 / CSA B125.1

LowFlow Capable



Legislation Compliance



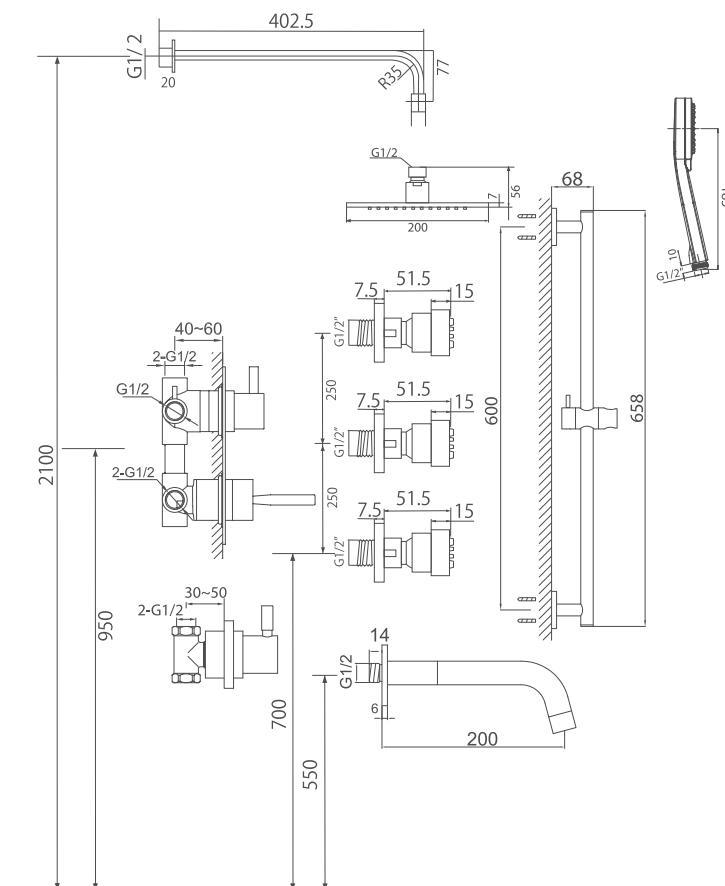
ZeroDrip Technology



Belgian Mirror Finish



Technical Diagram



Critical Dimensions in mm

www.isenberg.in